

A DEMO PLAN
SCALE 1/4"=1'-0"

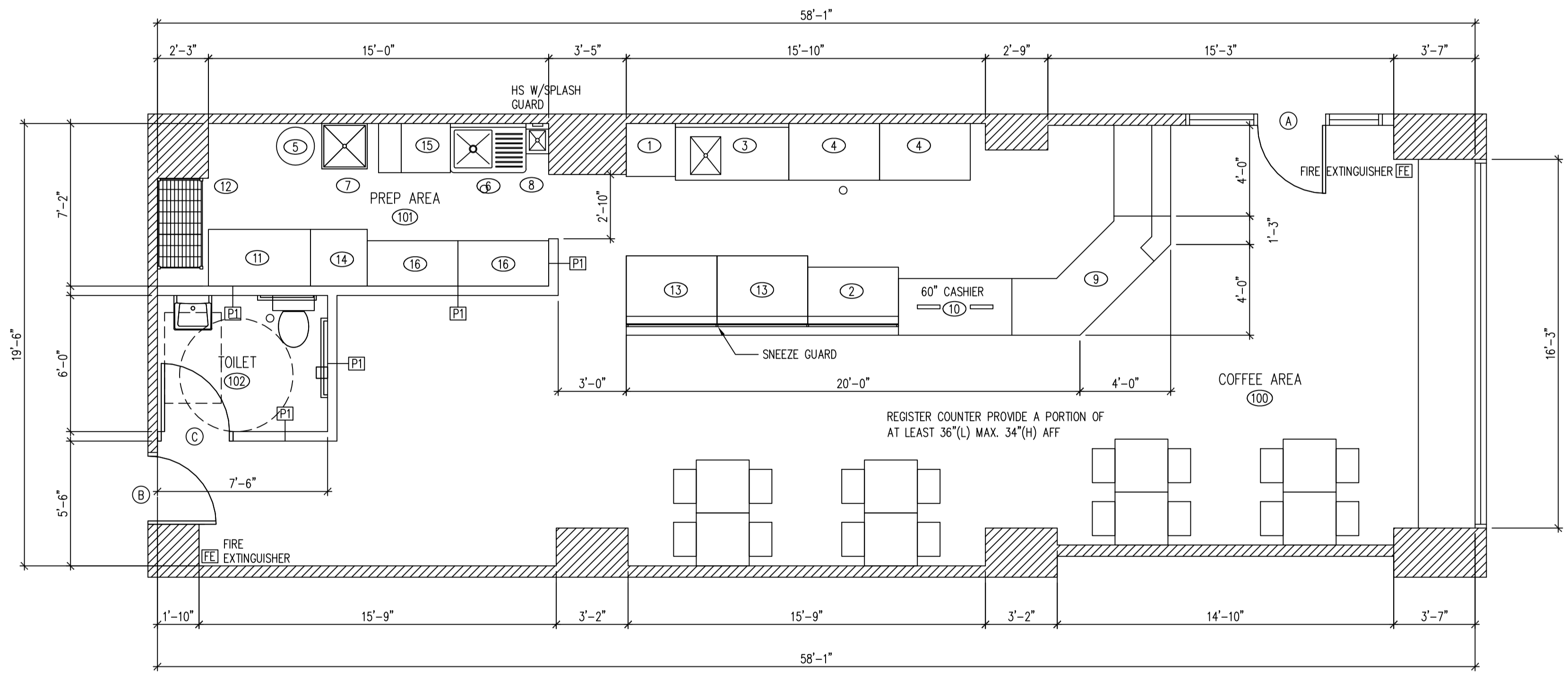
EQUIPMENT NOTES
CONTRACTOR SHALL INSTALL AND CONNECT ALL EQUIPMENT AS PER EQUIPMENT SUPPLIER'S SPECIFICATIONS. ALL LOCATIONS TO BE VERIFIED WITH OWNER PRIOR TO INSTALLATION.

PLUMBING CONTRACTOR SHALL PROVIDE ALL ROUGH-INS. INSULATE ALL COLD/HOT WATER PIPES AS REQUIRED.

ELECTRICAL CONTRACTOR SHALL PROVIDE ALL ELECTRICAL OUTLETS FOR EQUIPMENT. VERIFY ALL ELECTRICAL REQUIREMENTS WITH EQUIPMENT SUPPLIER. VERIFY ALL GAS AND WATER REQUIREMENTS WITH EQUIPMENT SUPPLIER.

ALL PERMANENT EQUIPMENT MUST BE LOCATED SO THAT AREAS BEHIND, UNDERNEATH, AND ON THE SIDES OF THE EQUIPMENT CAN BE EASILY CLEANED.

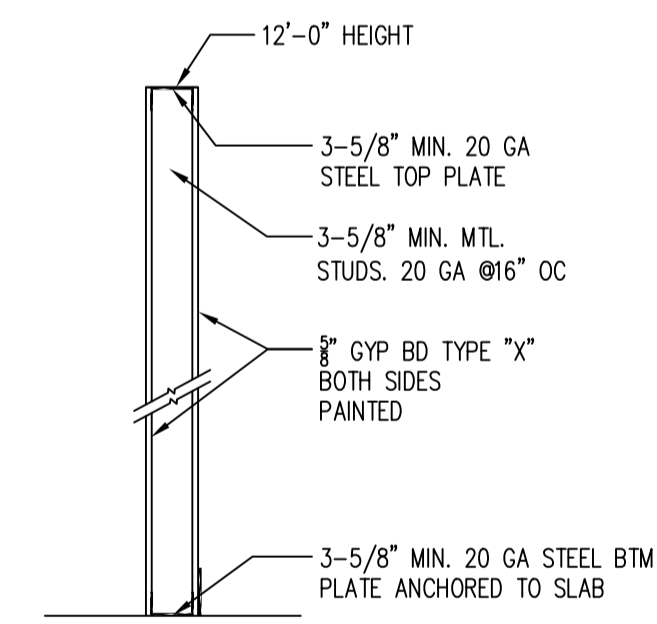
TWO DRAIN BOARDS ARE REQUIRED AT ALL THREE-COMPARTMENT SINKS ALONG WITH AN APPROPRIATELY SIZED FAUCET, LOCKABLE DRAIN PLUGS, AND AN INDIRECT CONNECTION TO THE SEWER.



B NEW FLOOR PLAN
SCALE 1/4"=1'-0"

DRY STORAGE
ALL FOOD AND FOOD RELATED ITEMS MUST BE STORED OFF THE FLOOR ON DURABLE WASHABLE SHELVES. THE STORAGE AREA MUST BE APPROPRIATELY SIZED BASED ON THE NUMBER OF MEALS SERVED DAILY AND THE NUMBER OF DELIVERIES WEEKLY.
DRY STORAGE REQUIRED: 25% X 120 = 30SF REQUIRED
ACTUAL PROVIDED: 4' X 2' X 4' = 32SF

ALL FOOD EQUIPMENT TO BE ON CASTERS, 6" LEGS, OR SEALED TO THE FLOOR FOR EASY CLEANING.
NO RAW WOOD SURFACES PERMITTED ANYWHERE. UNDERSIDES OF COUNTERTOPS, INSIDE OF CABINETRY, AND WATER HEATER PLATFORMS MUST BE SEALED.



P1 WALL TYPE P1
NOT TO SCALE

OCCUPANT LOAD SIGNAGE WILL BE PLACED IN A CONSPICUOUS LOCATION AT THE ENTRANCE TO THE RESTAURANT AND EACH ASSEMBLY SPACE.
THE EXIT DOORS ARE EQUIPPED WITH PANIC HARDWARE. CBC 1008.1.9
EMERGENCY AND GENERAL EGRESS DISCHARGE LIGHTING. CBC 1006.1 ON SHEET E1

COMMISSION ON CHICAGO LANDMARKS
Permit Reviewer: EB
APPROVED WITH CONDITIONS
Note: Any changes made to these plans after the approved date (see cover sheet) must be submitted to the Commission for review and approval.
DATE & CONDITIONS:

5/7/19 No exterior work or window replacement permitted with this approval.

COFFEE SHOP
INTERIOR REMODELING
29 E MADISON STREET SUITE 180 CHICAGO IL 60602

EQUIPMENT SCHEDULE						
NO	QTY	DESCRIPTION	GAS	ELECTRIC	PLUMBING	REMARKS
1	1	150LB ICE MAKER	-	120V	1/2" CW, 2" DRAIN	NSF
2	1	48" SANDWICH COOLER	-	120V	-	NSF
3	1	60"X30" WORK TABLE W/PREP SINK	-	-	1/2" CW, 1/2" HW, 3" INDIRECT DRAIN	NSF, W/ ECOLAB PATHWAY TO PREVENT BACKFLOW
4	2	48"X30" WORK TABLE	-	-	-	NSF, W/ 6" STAINLESS STEEL LEGS NSF APPROVED
5	1	ELEC. HOT WATER HEATER	3/4"	-	-	NSF, 50GALLON
6	1	1 COMPARTMENT SINK	-	-	1/2" CW, 1/2" HW, 3" INDIRECT DRAIN	NSF, W/ ECOLAB PATHWAY TO PREVENT BACKFLOW
7	1	MOP SINK	-	-	1/2" CW, 1/2" HW, 3" DRAIN	NSF, W/ MOP HOOKS, SEAL EDGES
8	1	HAND SINK	-	-	1/2" CW, 1/2" HW, 2" DRAIN	NSF, WALL MOUNTED - SEALED
9	1	PICK UP COUNTER W/UNDERSHELF	-	-	-	NSF
10	1	CASHIER COUNTER	-	-	-	NSF
11	1	54" REACH-IN REFRIGERATOR	-	120V	-	NSF, W/CASTER
12	1	SHELVEING	-	-	-	NSF APPROVED STAINLESS STEEL SHELVEING
13	2	48"X36" WORK TABLE W/CABINETS	-	-	-	NSF
14	1	SINGLE DOOR FREEZER	-	120V	-	NSF, W/CASTER
15	1	26"X26" DISHWASHER	-	120V	1/2" CW, 1/2" HW, 2" DRAIN	NSF
16	2	48"X24" WORK TABLE	-	-	-	NSF, W/ 6" STAINLESS STEEL LEGS NSF APPROVED

ALL EQUIPMENTS WILL BE NSF APPROVED CLEAN, OPERABLE AND SUBJECT TO THE FINAL APPROVAL BY THE HEALTH DEPARTMENT

ROOM FINISH SCHEDULE						
NO	ROOM	WALLS	BASE	FLOOR	CEILING	
100	COFFEE AREA	GYP BD PAINTED	QT COVE BASE	FLOOR TILE	EXIST'G OPEN CEILING	
	SERVICE AREA	CERAMIC TILE	QT COVE BASE	FLOOR TILE	EXIST'G OPEN CEILING	
101	PREP AREA	STAINLESS STEEL	QT COVE BASE	QUARRY TILE	EXIST'G OPEN CEILING	
102	TOILET	GYP BD PAINTED	QT COVE BASE	FLOOR TILE	EXIST'G OPEN CEILING	

DOOR SCHEDULE								
TAG	DESCRIPTION	FRAME CONSTRUCTION	NOMINAL SIZE W X H	DOOR FINISH	FRAME FINISH	LABEL	HARDWARE SET	COMMENTS
A	STORE FRONT GLASS DOOR	ALUMINUM	3'-0" x 7'-0"	TEMPERED GLASS	ALUMINUM	-	2	EXIST'G FRONT EXIT DOOR
B	HOLLOW METAL DOOR	HOLLOW METAL	3'-0" x 7'-0"	PAINT	PAINT	-	2	EXIST'G BACK EXIT DOOR
C	WOOD DOOR	HOLLOW METAL	3'-0" x 6'-8"	PAINT	PAINT	-	1	NEW

* ALL EXIT DOORS MUST OPEN WITHOUT THE USE OF A KEY OR SPECIAL KNOWLEDGE FROM THE SIDE WHICH EGRESS IS MADE
* LEVERED HANDLE HARDWARE AS REQUIRED BY ILLINOIS ACCESSIBILITY CODE
* PROVIDE DOOR CLOSERS ALONG ALL ACCESSIBLE ROUTES

HARDWARE SCHEDULE	
TAG	DESCRIPTION
1	3 HINGES, W/LEVERED PRIVACY LOCKSET, KICKPLATE AND DOOR CLOSER
2	PANIC EXIT DEVICE
3	3 HINGES

REACH-IN REFRIGERATION AND FREEZER UNITS TO BE INSTALLED ON CASTERS.
HEAVY-DUTY MOP RACKS LOCATED OVER MOP SINK.
METAL GARBAGE CANS WITH LIDS FOR RESTROOMS. SANITARY BOX IN RESTROOM.
ALL NSF APPROVED HAND SINKS TO BE WITH BLADE HANDLED FAUCETS.
BEVERAGE STATION & COUNTER TOP - STAINLESS STEEL .
ALL CABINET SHELVES - STAINLESS STEEL.
ALL CABINET BASE - 6" STAINLESS STEEL LEGS (NO KICK BASE)
LAVATORY COUNTERTOP TO BE SOLID SURFACE (NO PLASTIC LAMINATE OR CABINETRY)
ANY PAINTED FINISHES TO BE SEMI-GLOSS OR GLOSS (NO FLAT, NO EGG SHELL, NO TEXTURE),
PROVIDE FRP ON WALL AND UNDERSIDE OF SERVICE AREA.

Doors leading to the outside and restroom doors are required to be self-closing and tight-fitting. Please confirm that the doors leading to the outside are equipped with a self-closer and weather strips to eliminate any air gaps.

ISSUES	DATE
ISSUED FOR PERMIT	03/08/2019



FLOOR PLAN, NOTES, & SCHEDULES

SHEET NUMBER

A1